



The heart and pericardium

Abnormal cardiopericardial shadow

What will I gain from this video?

After watching this video, you will know how to identify an abnormal cardiopericardial shadow.

The cardiopericardial shadow is abnormal when:

- The **grayscale** of the cardiopericardial silhouette is too white.
- The **size** of the cardiopericardial silhouette is enlarged.
- The **shape** of the cardiopericardial silhouette is distorted (focal enlargement of specific cardiopericardial silhouette contours).
- The **position** of the cardiopericardial silhouette is shifted.
- A **special case**: the failing left heart—congestive heart failure (CHF).

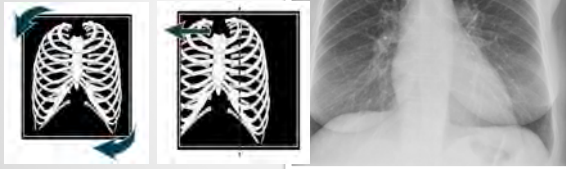
Cardiothoracic ratio

Relationship between the diameter of the heart and the diameter of the thorax



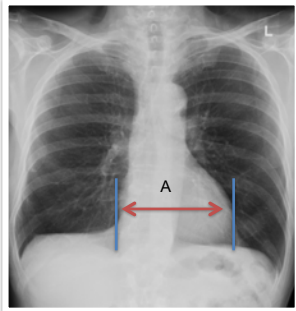
How to measure the cardiothoracic ratio

STEP 1



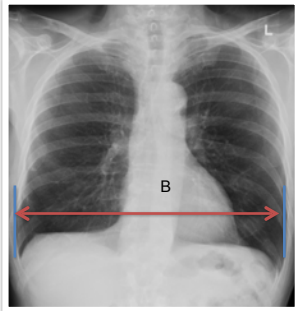
How to measure the cardiothoracic ratio

STEP 2



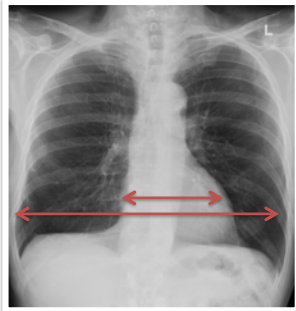
How to measure the cardiothoracic ratio

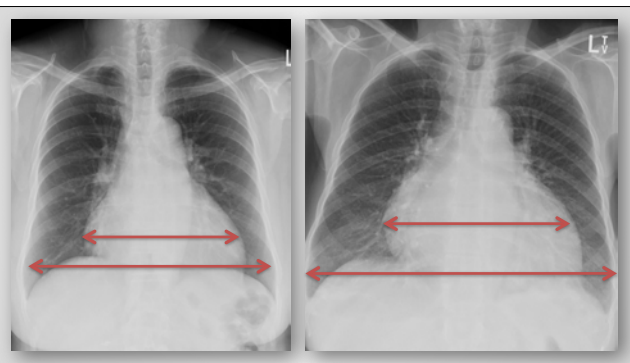
STEP 3

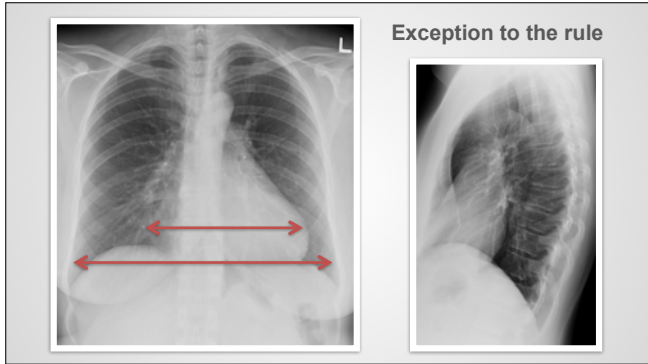


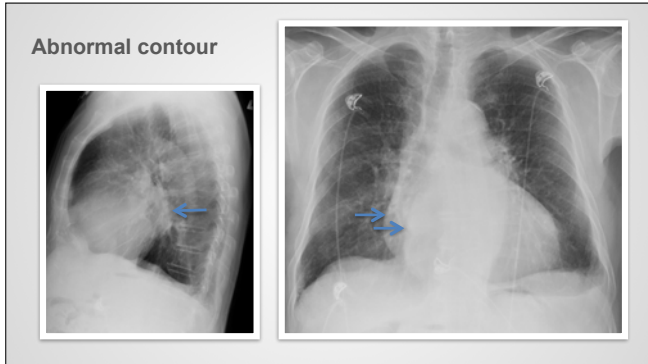
How to measure the cardiothoracic ratio

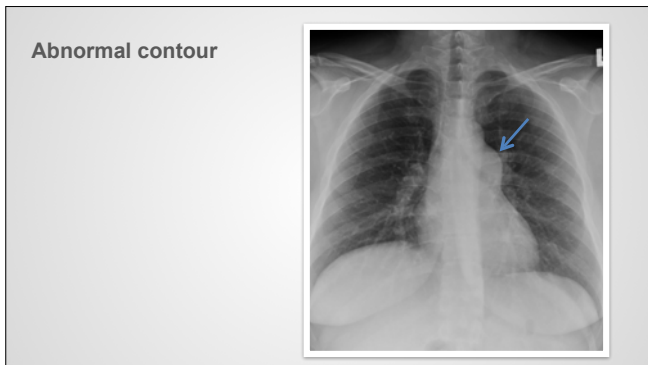
STEP 4











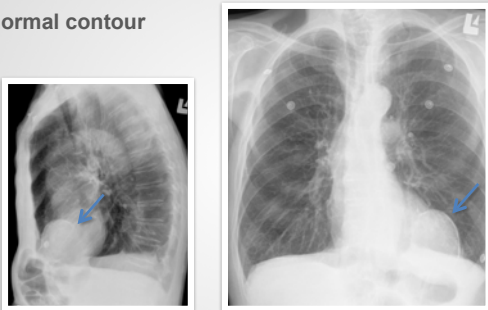
Abnormal contour



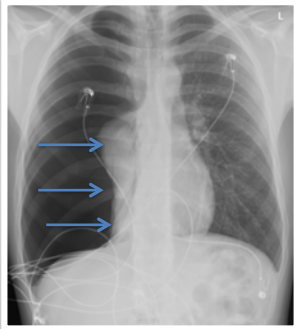
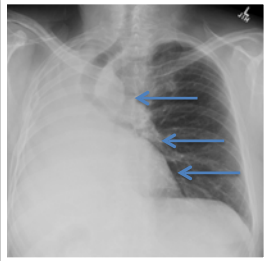
Abnormal contour



Abnormal contour



Abnormal position



Special case



Special case



When suspecting a cardiac or pericardial abnormality

Look for:

- Change of size of the heart
- Change in shape of the heart
- Abnormal contour
- Abnormal calcification
